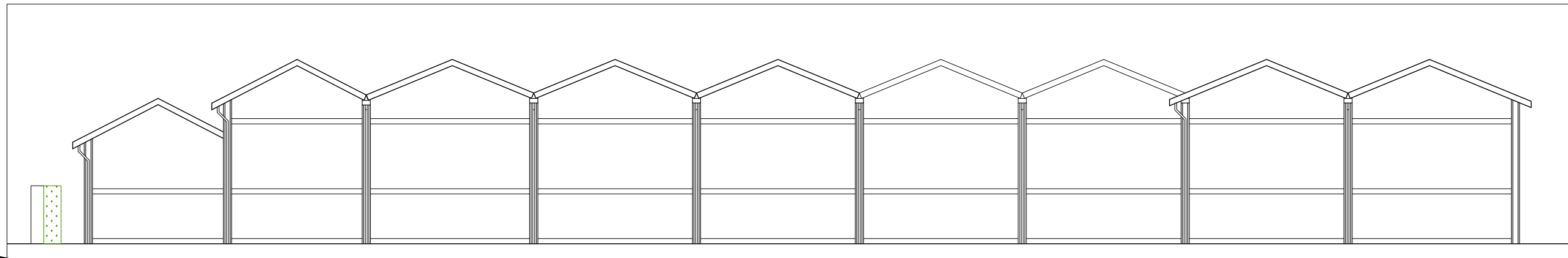
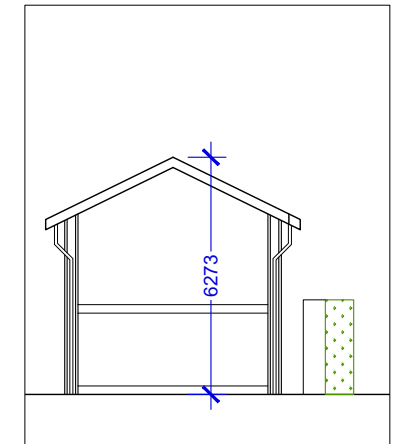
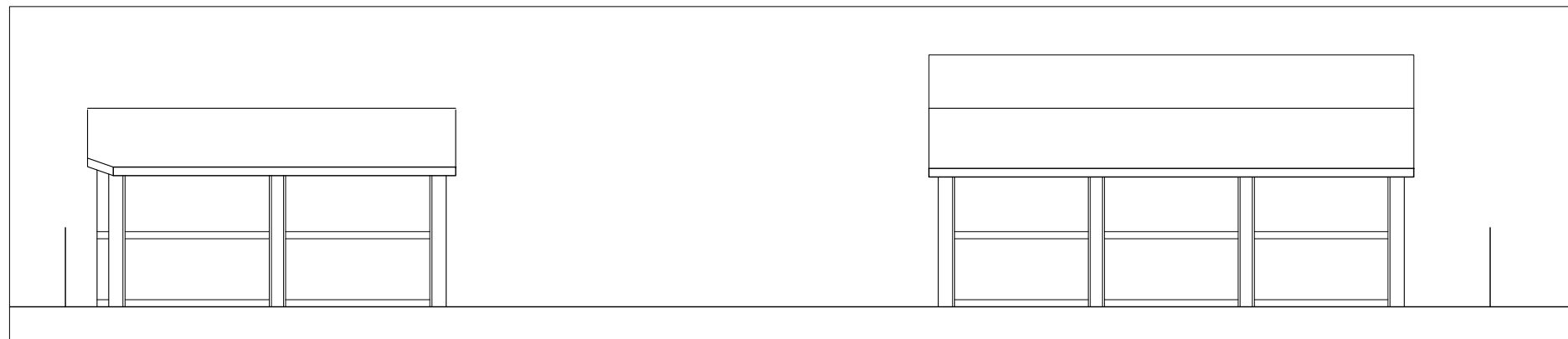
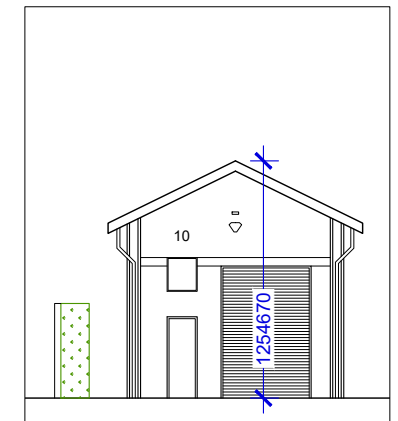


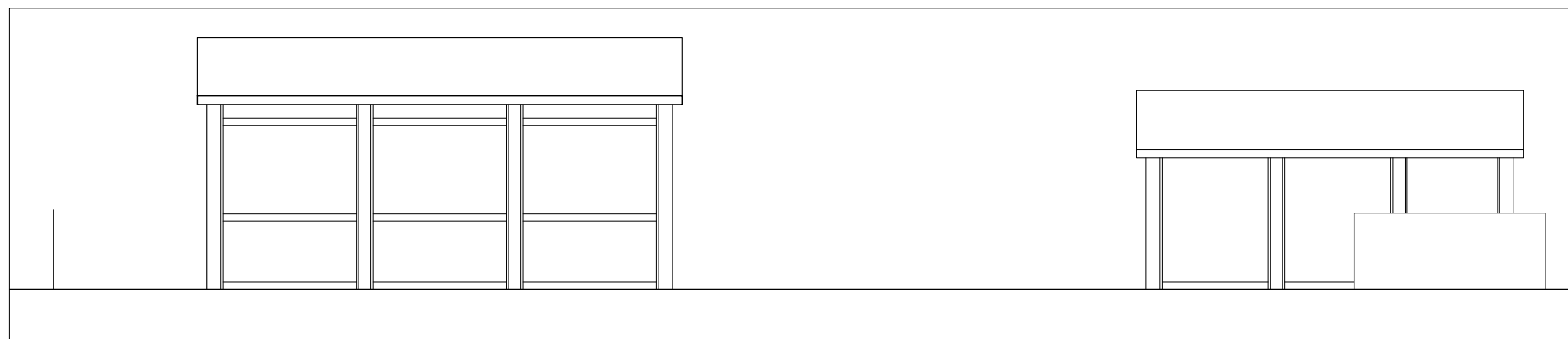
NORTH WEST ELEVATION



SOUTH EAST ELEVATION



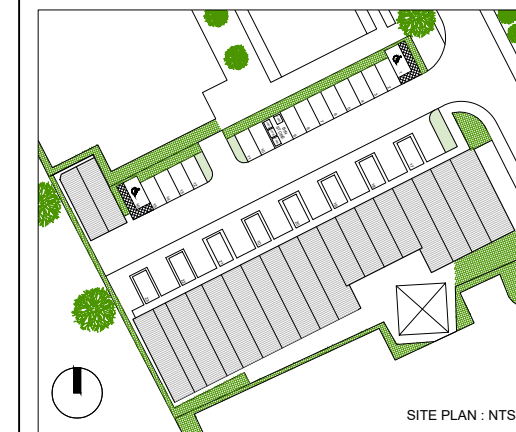
SOUTH WEST ELEVATION



NORTH EAST ELEVATION



NOTES:



REV	DATE	NOTES
B	23.11.2022	Issued for planning - Correct dimensions
A	18.11.2022	Issued for planning - Indicated existing hedge - Units 8 - 9 - 10 reduced in size - Units 9 - 10 roof made lower
/	12.08.2022	Issued for planning

CAD file location: 1686 -- Drawings -- Preliminary -- Site Elevations

DO NOT SCALE FROM THIS DRAWING IN EITHER PAPER OR DIGITAL FORM. © CSK ARCHITECTS LTD. THE COPYRIGHT IN ANY DRAWINGS AND OTHER MATERIAL PRODUCED BY CSK ARCHITECTS IS OWNED BY CSK ARCHITECTS AND NO LICENCE TO USE OUR COPYRIGHT MATERIAL IS GIVEN OR IMPLIED UNLESS PAYMENT OF OUR AGREED FEES HAS BEEN MADE IN FULL. USE OF OUR COPYRIGHT MATERIAL IS THEN PERMITTED ONLY IN RELATION TO THE PROJECT FOR WHICH WE HAVE BEEN PAID BY YOU. THIS DRAWING TO BE READ WITH ALL OTHER RELEVANT DRAWINGS AND SPECIFICATIONS ANY DISCREPANCIES TO BE BROUGHT TO THE ATTENTION OF THE ARCHITECT.

PLANNING ISSUE		OCT 2021	DRAWN BY	SM/JO/GP
The Lawrence Centre	Wokingham	RG41 2FE	1:200 @ A3	CHECKED BY
SITE ELEVATIONS Proposed			P-1686/03	B

CSK CHARTERED ARCHITECTS
 93A HIGH STREET ETON BERKSHIRE SL4 6AF T.01753 840519 CSKARCHITECTS.CO.UK

This page is intentionally left blank